



power to
change

business in
community
hands



COMMUNITY
FUND

WEBINAR: RESILIENT COMMUNITIES FUND

Susie Finlayson – Head of
Design and Delivery

Will Walker – Climate Action
Manager

2nd November 2022





power to
change

business in
community
hands

WHAT WE'LL COVER TODAY

- Introduction to Power to Change
- Introduction to the Resilient Communities Fund
- What's on offer
- Who is eligible
- The application process
- How we'll assess applications
- Q&A



power to
change

business in
community
hands

ABOUT POWER TO CHANGE

Power to Change is the independent trust that strengthens communities through community business.





power to
change

business in
community
hands

OUR MISSION

Strengthen the community business sector

At Power to Change, our mission is to strengthen community business to tackle some of society's biggest challenges at a local level, including the three biggest challenges of our time: climate change, digital transformations and social inequalities

OUR VISION

Powerful communities, better places

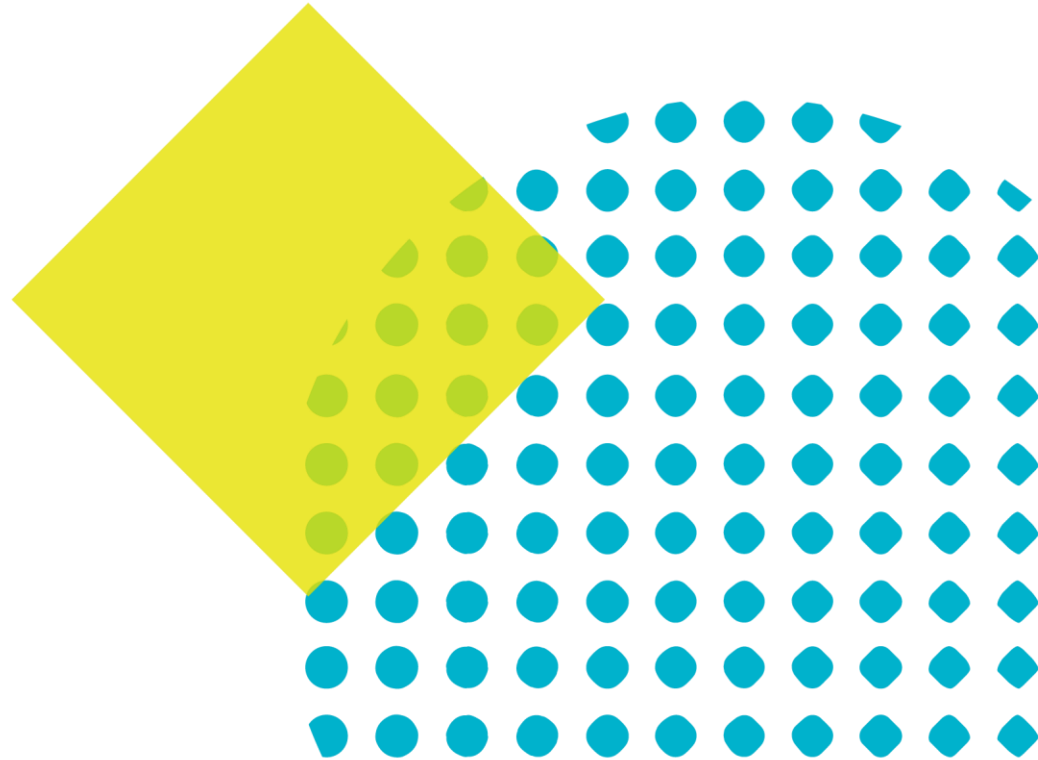
By 2025, more communities in England run businesses that give them power to change what matters to them. They create more resilient places that are better to live and work in for everyone



power to
change

business in
community
hands

RESILIENT COMMUNITIES FUND





power to
change

business in
community
hands

WHY THE RESILIENT COMMUNITIES FUND?

- Cost of living and energy crises impacting community businesses and the communities they support
- Climate crisis requires profound changes in how we live and work
- Our crises are connected and hit those least able to cope the hardest
- Green solutions can address multiple challenges together at root - fossil fuels
- **Resilient Communities Fund** - to help communities weather the economic crisis and invest in green solutions like energy efficiency and clean energy so that they can come out stronger and better prepared for the climate transition



power to
change

business in
community
hands

WHAT IS THE RESILIENT COMMUNITIES FUND?

Round 1:

- Flexible grant of up to £10,000
- Capacity support focused on building energy improvements
- Six-month grant period (Dec 2022 – July 2023)
- Expect to support around 135 grantees initially
- Targeted (by invite only) at community businesses that we have deemed to need support most over winter

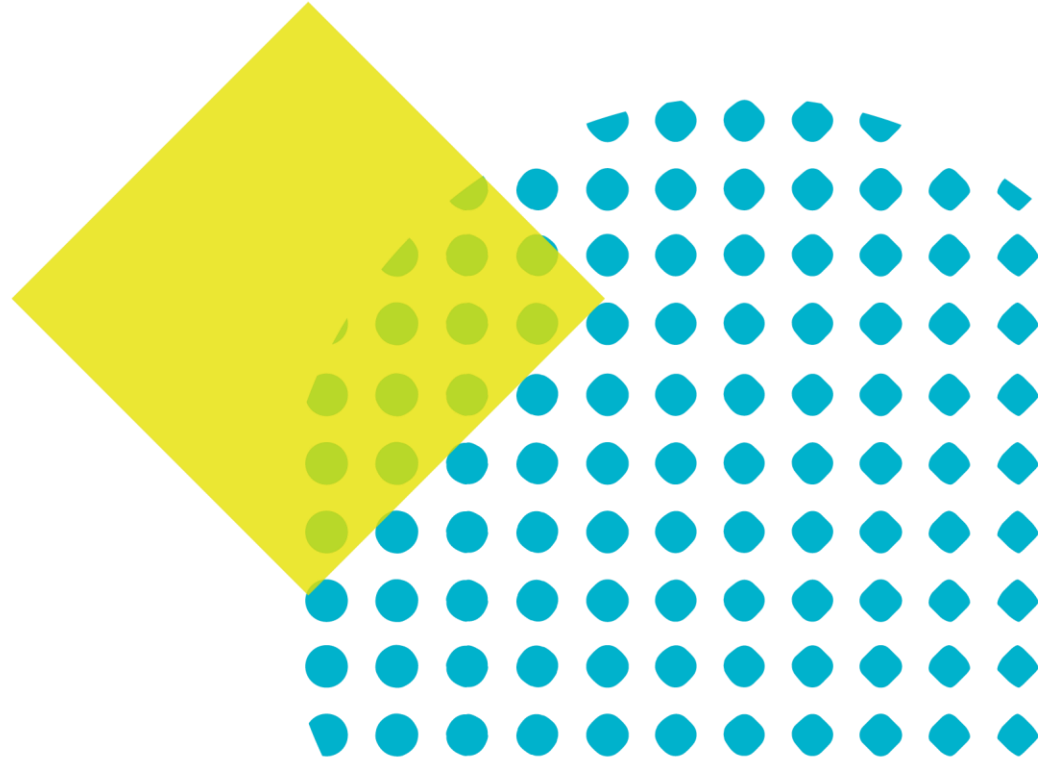
Round 2: will launch in the summer 2023. Enhanced funding and support for community business climate action.



power to
change

business in
community
hands

WHAT'S ON OFFER & WHO IS ELIGIBLE (ROUND 1)





power to
change

business in
community
hands

WHAT'S ON OFFER – ROUND 1

Flexible grant of up to £10,000 that can be used for:

- Paying off excess energy bills over the winter
- Activities and development work to improve the sustainability and energy resilience of your community business (e.g. building energy audits, renewable energy feasibility studies)
- Investments in building energy performance improvements (e.g. insulation, heating controls, low energy lighting upgrades)
- Additional goods and services to support local people with the cost of living and energy crises (e.g. food banks, warm banks, fuel poverty initiatives)
- Covering core staff costs or paying for cost of living pay allowance to staff

Funding must be used to further a charitable purpose for the public benefit of your local community



power to
change

business in
community
hands

SPECIALIST SUPPORT

- Power to Change is commissioning a specialist capacity support provider(s) to provide additional support alongside the grant
- Information, advice and guidance to help you improve your sustainability and energy resilience, reduce costs and carbon emissions
- Support expected to include access to online resources, events and bespoke one-to-one support
- You are encouraged to take the simple energy survey, accessible via the webpage, to help you identify options for your community building and where you might need support



power to
change

business in
community
hands

WHO IS ELIGIBLE

To qualify for Phase 1 of this Fund you must:

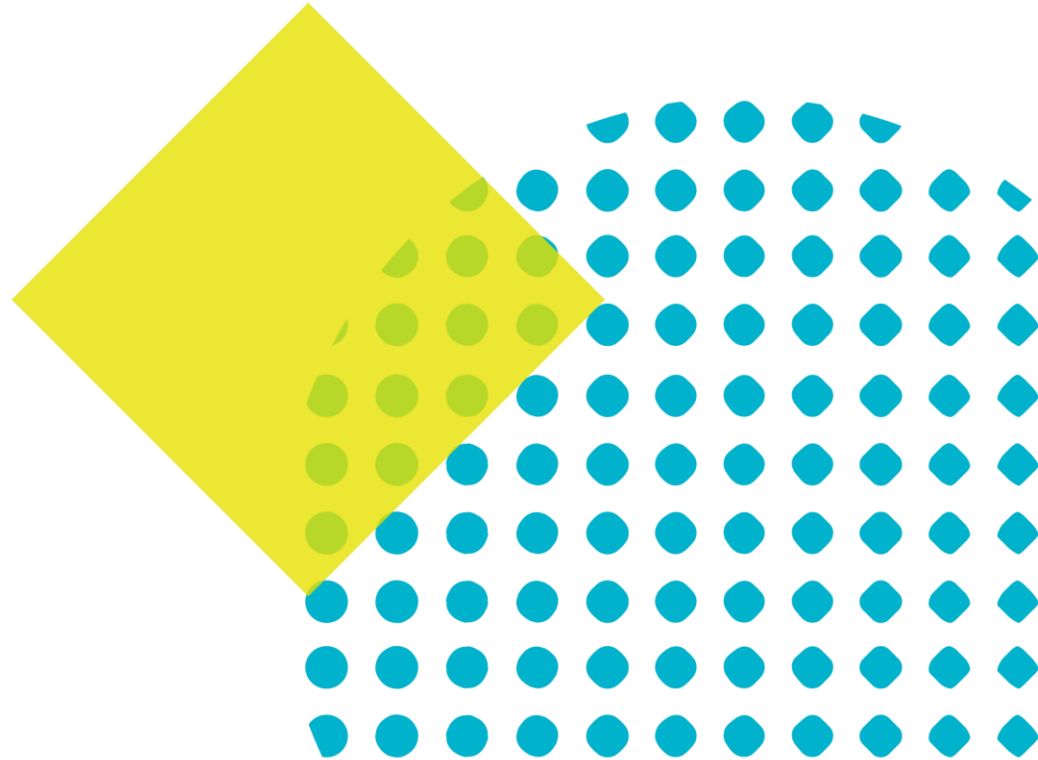
- Have received an invitation to apply via direct email from Power to Change
- Be a previous Power to Change grantee and a community business
- Own or manage a community building and be responsible for paying the energy bills
- Be able to demonstrate that use of the grant will further a charitable purpose for the public benefit of your local community



power to
change

business in
community
hands

THE APPLICATION PROCESS



APPLICATION TIMELINE

Invitations sent & applications open

- Monday 24th October

Webinar

- Wednesday 2nd November 4-5pm

Applications close

- Noon Monday 14th November

Decisions communicated

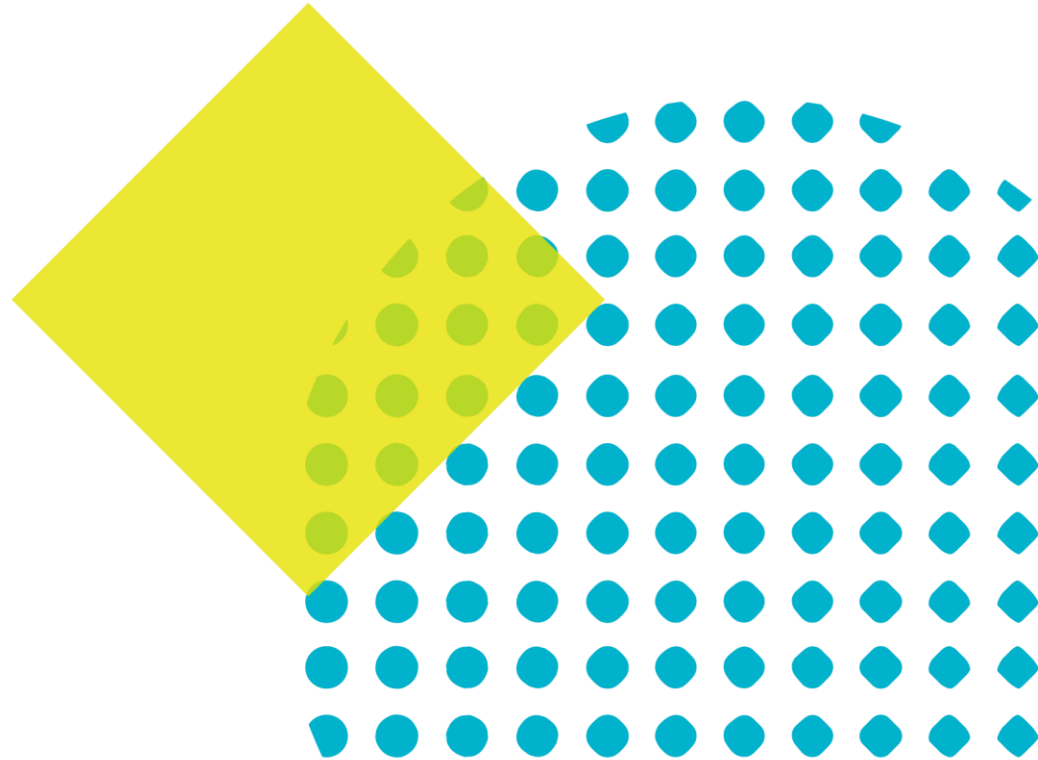
- Week commencing 12th December



power to
change

business in
community
hands

HOW WE'LL ASSESS YOUR APPLICATION





ASSESSMENT CRITERIA

We don't expect you to fulfil all the following criteria, but would like to see evidence of at least two of the following:

- Your community business owns or manages a community building, and is responsible for paying the energy bills, which provides charitable activities to the community;
- Your community business is being impacted by the cost of living and energy crisis;
- Your community business will use the grant and support to help the local community through the cost of living and energy crisis;
- Your community business will use the grant and support to build its resilience in the medium term, including through green solutions



power to
change

business in
community
hands

PRIORITISING APPLICATIONS

Round 1 may be oversubscribed, if so we will prioritise based on which community businesses need the support most. Factors we will consider include:

- Community businesses led-by and/or working with low income and marginalized communities
- The impact the cost of living and energy crisis is having on your organisation
- An assessment of your organisation's vulnerability to economic shocks

CONTACT US

If you have any questions
please contact us at:

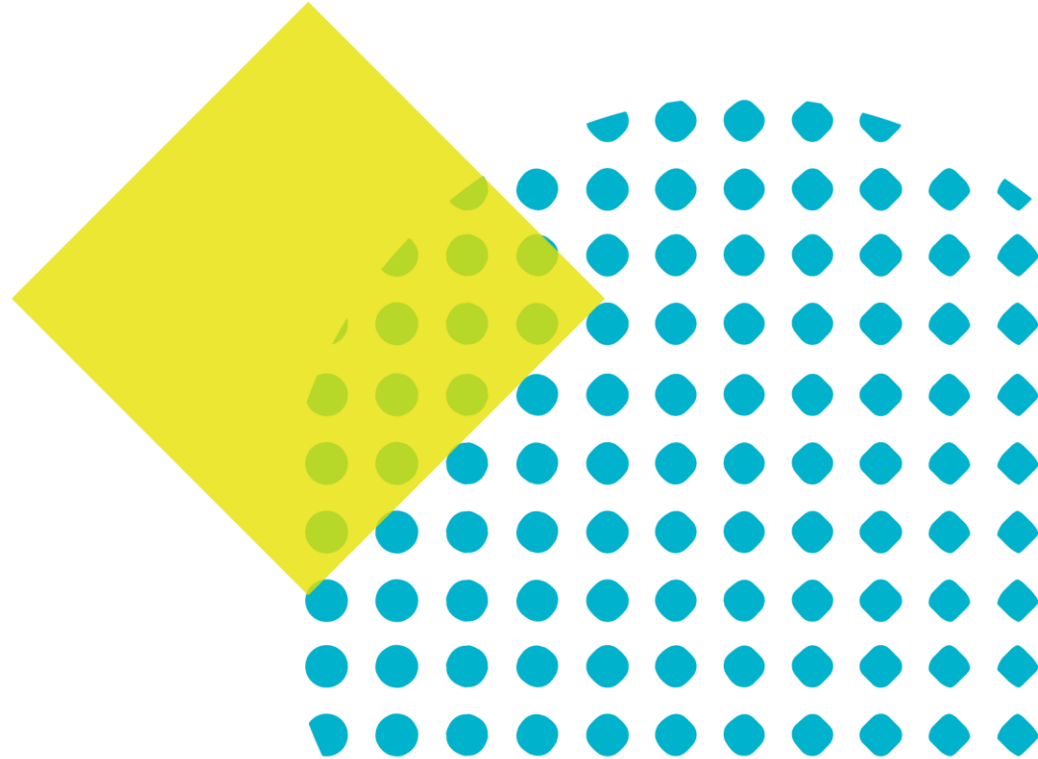
[resilientcommunities@power
tochange.org.uk](mailto:resilientcommunities@power
tochange.org.uk)



power to
change

business in
community
hands

Q&A





power to
change

business in
community
hands



COMMUNITY
FUND

THANK YOU FOR LISTENING

resilientcommunities@powertochange.org.uk

powertochange.org.uk



@peoplebiz

